

Private Elementary School

Texas

Project Size

9,094 sq ft

Construction

Type V-b

Contract Type

Negotiated

Facility Use

Elementary school

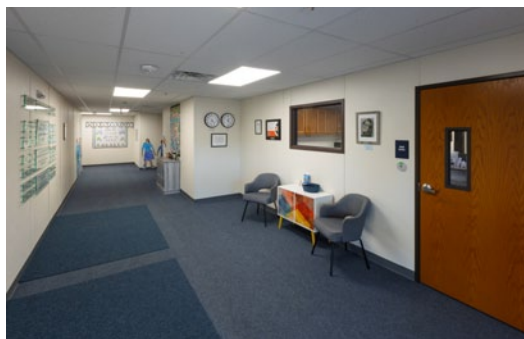
Description

Eight classroom building with offices

Completion

120 days

Pier & Beam
Permanent
Modular
Construction



This small private school required a new elementary classroom complex to meet their growing student enrollment. Ramtech worked with their general contractor to provide a 9,094sf pier and beam permanent modular building that consists of eight classrooms, art room, front office and three private offices, conference room, boys and girls restrooms, break/work room, and a resource area. The exterior of the facility features R-Panel metal siding, a storm-resistant standing seam metal roof, storefront exterior windows, and aluminum entries and canopies. The interior features VCG on all walls, a combination of VCT and carpet tile flooring, and a lay-in tile ceiling. The heating and cooling of the building is accommodated using multiple high efficiency HVAC split systems.

RAMTECH
Building Systems
800-568-9376
ramtechmodular.com