



Prestonwood Christian Academy

Prosper, TX

Project Size

9,344 sq ft

Construction

IBC Type V-b

Contract Type

Negotiated purchase

Facility Use

Classrooms and offices

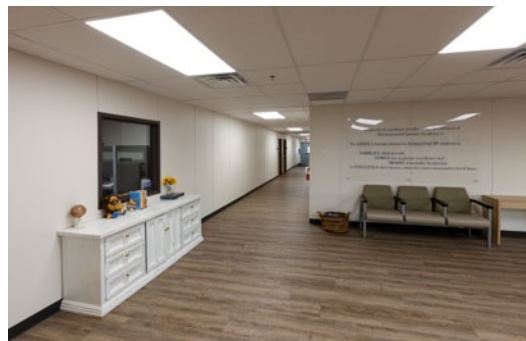
Description

Middle school classrooms with private offices and commons area

Completion

90 days

Relocatable
Modular Building



As the fastest growing Christian school in the country, Prestonwood Christian Academy North required additional facility space to accommodate the school's middle school students. Using traditional modular construction Ramtech designed and constructed a 9,344 square foot building with eight classrooms, a multi-use commons area, administrative space for two offices and a conference room, and boys' and girls' restrooms. The exterior of the building utilizes a parapet wall design finished with HardiePanel fiber cement vertical siding to blend in with the existing adjacent main campus structure. Ramtech's scope of work included the installation of the modular sections, the utility point of connections, all interior finish-out, and the installation of the aluminum steps, decks, and ramps.

RAMTECH[®]
Building Systems
800-568-9376
ramtechmodular.com